



Statistics for July 2025: Forced returns from Norway

The police forcibly returned 202 persons in July 2025, 57 of whom were convicted offenders.

The National Police Immigration Service (NPIS) is responsible for executing, coordinating and assuring the quality of all returns of foreigners staying illegally in Norway. The respective police districts are responsible for returns following refusal of entry or stay, while the NPIS is responsible for returning persons who have had their asylum applications rejected or who are returned under the Dublin procedure or to safe third countries. The Norwegian Directorate of Immigration (NDI) is responsible for assisted returns, previously called voluntary returns. Assisted returns are not included in these statistics.

Compared with 2024

	Forced returns
As at 31. July 2024	1467
As at 31. July 2025	1390
Change in percent	-5 %

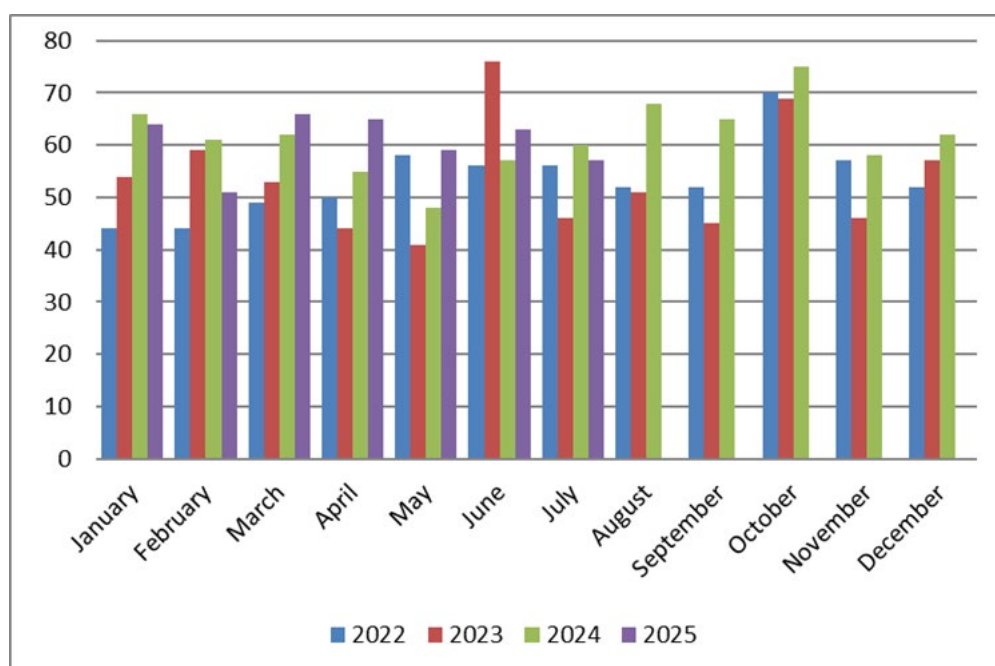
These figures may change due to delays in the registration process.

Convicted offenders

In July, the police returned 57 convicted offenders, 28% of all returnees that month.

So far this year, 425 convicted offenders have been returned, compared with 409 in the same period last year.

Below are statistics for the last four years:



Convicted offenders returned over the last four years

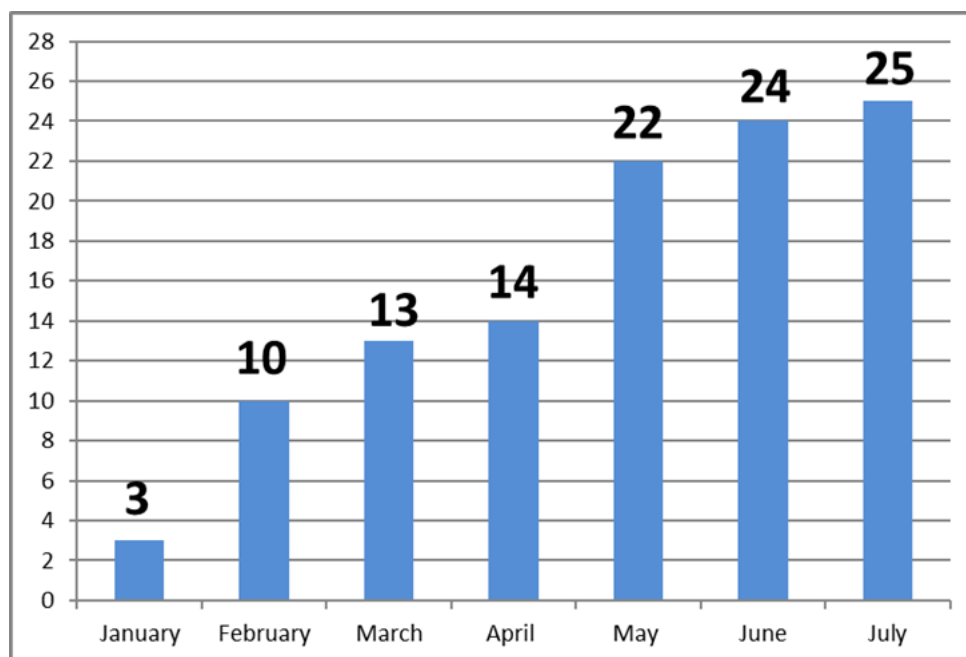
The most common nationalities among convicted returnees so far this year are Romanian (21%), Lithuanian (10%) and Polish (9%).

Minors

A total of 25 minors were returned in July, either to their home country or to a safe third country. 22 traveled with a parent or another family member, while three were unaccompanied minors.

As a rule, Norwegian authorities do not attempt to verify the age of unaccompanied minors when they are to be returned to another European country under the Dublin III Regulation.

All returned unaccompanied minors must be met by either family members or others who will care for them, e.g. representatives of relevant institutions or the child welfare services in the country in question.



Returned minors so far this year

Returns on chartered flights

No returnee flights were chartered in July. So far this year, there has been two chartered returnee flights.

The various returnee categories

The police return persons who have no legal right to stay in Norway, i.e. not only persons who have had their application for asylum and any appeals rejected.

- 1) **Asylum** – all persons who have applied for protection (asylum) in Norway and who have had their application processed and rejected in Norway and have exhausted all avenues of appeal. This category also includes persons subject to an expulsion order.
- 2) **Dublin** – anyone returned under the Dublin Regulation. This also includes persons subject to an expulsion order. The Dublin Regulation applies in the EU, Iceland, Liechtenstein, Switzerland and Norway. The Regulation governs, inter alia, which member state will process any given asylum application. The purpose of the Regulation is to prevent asylum seekers from applying in multiple countries, but also to ensure that one of the countries assumes responsibility for the asylum seeker.

- 3) **International protection** – Returns of third-country nationals granted international protection (IP) in another Schengen country. Previously categorised as 'Dublin' returns, IP cases will henceforth be treated as a separate category, as they are not processed under the Dublin Regulation.
- 4) **Refused entry or stay** – persons who have been refused entry or stay as they are not permitted to stay here. This Julybe for various reasons, but persons who are refused entry or stay are not banned from Norway after their return.
- 5) **Expelled** – anyone expelled from Norway who has not applied for protection (asylum) or who is not subject to the Dublin Regulation. Most of those who fall into this category have been expelled due to a criminal conviction and are banned from Norway for a specific period of time. Violation of the re-entry ban is a punishable offence.

Returnees so far this year by nationality						
	Asylum	Dublin	Granted international protection	Refused stay or entry	Expulsion	Total
Afghanistan		15	18	3	2	38
Albania	2				11	13
Algeria		5			2	7
Argentina	1				1	2
Armenia	1				1	2
Azerbaijan	1	6		4		11
Australia	1			4	1	6
Bangladesh	5				1	6
Belarus		1		1	7	9
Belgium				1		1
Bosnia and Herzegovina	1				2	3
Brazil	2	1		4	10	17
Bulgaria					1	1
Burkina Faso		1				1
Canada	1			3	3	7
Chile					4	4
Colombia	30			11	29	70
Cuba					2	2
Denmark					1	1
Ecuador				1		1
Egypt		2		2	2	6
Equatorial Guinea		2				2
El Salvador	4			3	1	8
Ivory Coast		1				1
Eritrea	1	16	6	3	3	29
Estonia					1	1
Eswatini					1	1

Returnees so far this year by nationality						
	Asylum	Dublin	Granted international protection	Refused stay or entry	Expulsion	Total
Ethiopia	20	3	2		2	27
Philippines				2	4	6
France					1	1
Gambia		1		2		3
Georgia	2			3	5	10
Ghana	1			5	1	7
Guinea		4			1	5
Guinea-Bissau					1	1
Haiti				1		1
Greece					1	1
India	1	2		3	3	9
Indonesia				4	4	8
Iraq	4	9		5	9	27
Iran	7	4	7	7	2	27
Israel				1	4	5
Italy				2		2
Japan	3					3
Yemen		3		1		4
Jordan		1				1
Cameroon		3				3
Kazakhstan		4		1		5
Kenya	1			1		2
China	1	9		26	10	46
Kyrgyzstan					1	1
Congo		5		3		8
Kosovo	6			6	10	22
Croatia					1	1
Kuwait		1			2	3
Laos				1		1
Latvia					5	5
Lebanon	1	1				2
Liberia		2				2
Libya	1	1		2		4
Lithuania				2	42	44
Malaysia				1	1	2
Maldives		9				9
Mali		2				2
Morocco	2	4		2	5	13
Mauritania		1				1
Mexico				3	2	5
Moldova	1				5	6
Mongolia					4	4
Namibia					1	1
Netherlands	1				8	9

Returnees so far this year by nationality						
	Asylum	Dublin	Granted international protection	Refused stay or entry	Expulsion	Total
Nigeria	1	2	2	6	3	14
North Macedonia				1		1
Pakistan		1		8	1	10
Palestine		26	4			30
Paraguay					1	1
Peru				1	3	4
Poland				12	31	43
Portugal					4	4
Romania				9	83	92
Russia		18		50	3	71
Rwanda	1	1				2
Saudi Arabia		1			1	2
Senegal		1				1
Serbia				2	4	6
Sierra Leone			1		1	2
Singapore					2	2
Slovakia					1	1
Somalia	2	8	4	1	7	22
Spain				2		2
Stateless	1	10		2	4	17
United Kingdom				67	21	88
Sudan		4				4
Switzerland					2	2
Sweden				1	24	25
Syria	18	33	22	1	4	78
South Africa		1		1	1	3
South Korea	1					1
South Sudan		3		1		4
Tajikistan				1		1
Tanzania		2			1	3
Thailand				4		4
Chad		1				1
Tunisia		3		1	1	5
Turkey	13	16		9	7	45
Germany				2	6	8
Uganda		1			2	3
Ukraine	8	100	1	8	8	125
Hungary					1	1
United States	11	3		17	11	42
Uzbekistan					2	2
Venezuela		2		1	9	12
Vietnam					4	4
Zambia				1		1

Returnees so far this year by nationality						
	Asylum	Dublin	Granted international protection	Refused stay or entry	Expulsion	Total
Zimbabwe	1	1				2
Sum	159	357	67	333	474	1390

Returnees so far this year by destination						
	Asylum	Dublin	Granted international protection	Refused stay or entry	Expulsion	Total
Afghanistan				1		1
Albania	2				10	12
Algeria					1	1
Argentina	1				1	2
Armenia	1				2	3
Azerbaijan	1			4		5
Australia	1			1	1	3
Bangladesh	5				1	6
Belarus					4	4
Belgium		5	1	1		7
Bosnia and Herzegovina	1				2	3
Brazil	2			3	9	14
Bulgaria		7	1		2	10
Canada	1			1	4	6
Chile					4	4
Colombia	30			8	26	64
Cuba					2	2
Denmark		10		5	1	16
United Arab Emirates				6	1	7
Ecuador				2		2
El Salvador	4			2	1	7
Estonia				1	1	2
Ethiopia	21					21
Philippines				2	4	6
Finland		2				2
France		36	3	2	4	45
Gambia				2		2
Georgia	2			3	5	10
Ghana				2	1	3
Guinea-Bissau					1	1
Greece			38		4	42
Hong Kong					1	1
India	1			2	2	5

Returnees so far this year by destination						
	Asylum	Dublin	Granted international protection	Refused stay or entry	Expulsion	Total
Indonesia					4	4
Iraq	4			2	8	14
Iran	7				1	8
Ireland			1	2		3
Iceland		1				1
Israel				1	4	5
Italy			1	9	3	13
Japan	3					3
Kazakhstan				1		1
Kenya	1					1
China				7	6	13
Kyrgyzstan					1	1
Kosovo	6			5	9	20
Croatia		16		1	1	18
Kuwait					2	2
Cyprus			1	2		3
Latvia		2		1	7	10
Lebanon	3					3
Libya	1			1		2
Lithuania		4		2	42	48
Malaysia				2	1	3
Malta		4				4
Morocco	2				3	5
Mexico				1	2	3
Moldova	1				6	7
Mongolia					4	4
Namibia					1	1
Netherlands		17	1		9	27
Nepal				1		1
New Zealand				1		1
Nigeria	1			3	2	6
Oman	1					1
Pakistan				1	1	2
Paraguay					1	1
Peru				1	3	4
Poland		50	1	12	35	98
Portugal		3		2	8	13
Qatar				1		1
Romania		12		10	82	104
Russia				31	3	34
Rwanda	1					1
Saudi Arabia				1	1	2
Serbia				5	4	9
Singapore					2	2

Returnees so far this year by destination						
	Asylum	Dublin	Granted international protection	Refused stay or entry	Expulsion	Total
Slovakia		8			1	9
Somalia	2				5	7
Spain		49		6	10	65
United Kingdom	2			108	28	138
Switzerland		4			2	6
Sweden		28	2	9	30	69
Syria	18					18
South Africa					2	2
South Korea	1					1
Tajikistan					1	1
Tanzania					1	1
Thailand				7		7
Czech Republic		8		3		11
Turkey	13			25	6	44
Germany	1	85	16	6	13	121
Uganda					1	1
Ukraine	6				1	7
Hungary		1			1	2
United States	11			13	11	35
Uzbekistan					1	1
Venezuela				1	5	6
Vietnam					4	4
Zambia				1		1
Zimbabwe	1					1
Austria		5	1			6
Sum	159	357	67	333	474	1390

By destination we mean the country the person is returned to, not necessarily the person's country of origin (or country of nationality).