



## Statistics for March 2025: Forced returns from Norway

**The police forcibly returned 204 persons in March 2025, 65 of whom were convicted offenders.**

The National Police Immigration Service (NPIS) is responsible for executing, coordinating and assuring the quality of all returns of foreigners staying illegally in Norway. The respective police districts are responsible for returns following refusal of entry or stay, while the NPIS is responsible for returning persons who have had their asylum applications rejected or who are returned under the Dublin procedure or to safe third countries. The Norwegian Directorate of Immigration (NDI) is responsible for assisted returns, previously called voluntary returns. Assisted returns are not included in these statistics.

### Compared with 2024

	Forced returns
As at 31. March 2024	570
As at 31. March 2025	551
Change in percent	-3%

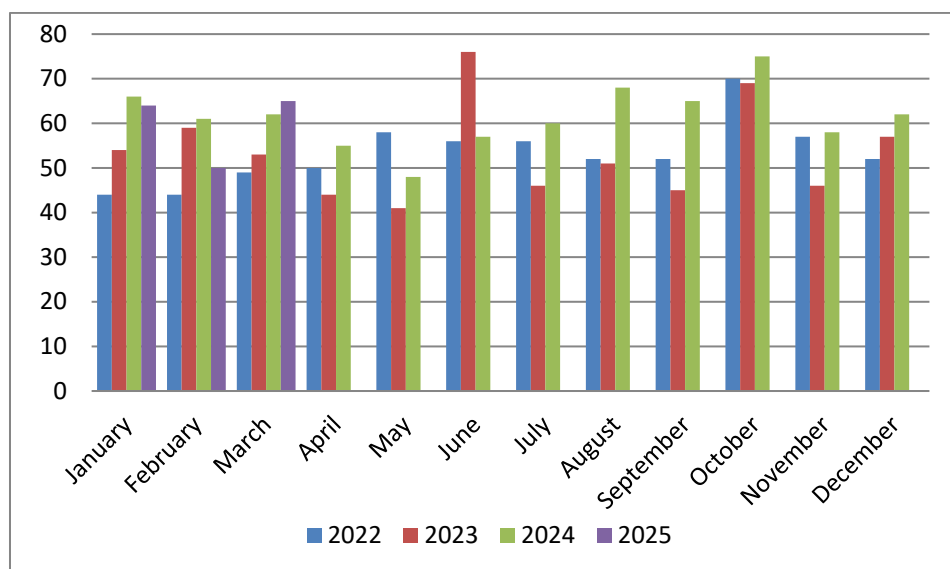
*These figures may change due to delays in the registration process.*

### Convicted offenders

In March, the police returned 65 convicted offenders, 32% of all returnees that month.

So far this year, 180 convicted offenders have been returned, compared with 190 in the same period last year.

Below are statistics for the last three years:



### Convicted offenders returned over the last four years

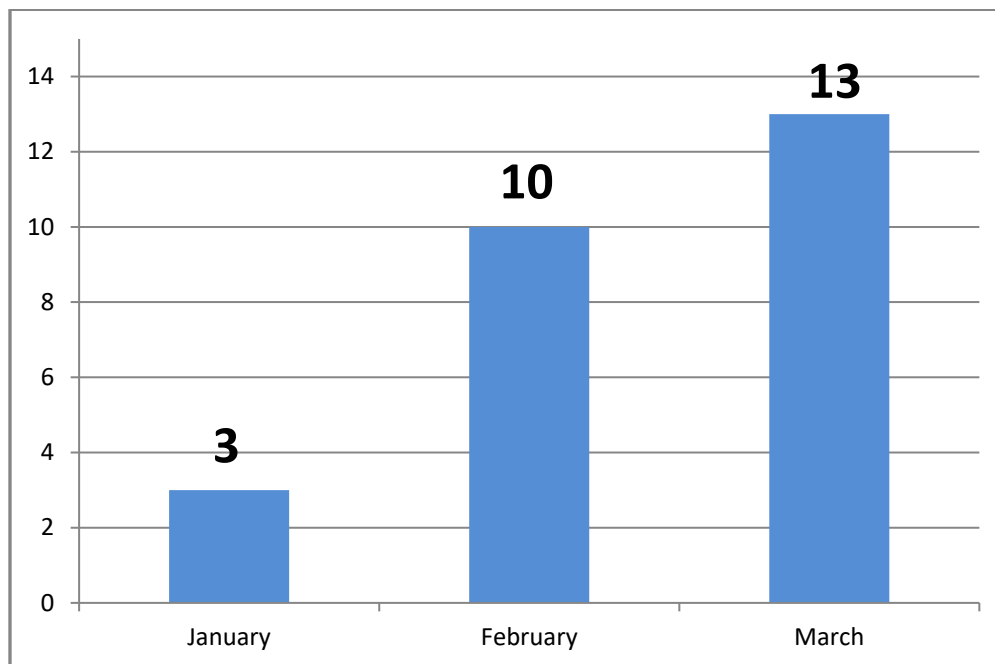
The most common nationalities among convicted returnees so far this year are Romanian (19%), Polish (16%) and Lithuanian (10%).

## Minors

A total of 13 minors were returned in March, either to their home country or to a safe third country. 12 travelled with their parents or another family member, while one was an unaccompanied minor. This minor was returned to Denmark under the Dublin 111 regulation, accompanied by the police.

As a rule, Norwegian authorities do not attempt to verify the age of unaccompanied minors when they are to be returned to another European country under the Dublin III Regulation.

All returned unaccompanied minors must be met by either family members or others who will care for them, e.g. representatives of relevant institutions or the child welfare services in the country in question.



*Returned minors so far this year*

## Returns on chartered flights

No returnee flights were chartered in March. So far this year, there has been one chartered returnee flight.

## The various returnee categories

The police return persons who have no legal right to stay in Norway, i.e. not only persons who have had their application for asylum and any appeals rejected.

- 1) **Asylum** – all persons who have applied for protection (asylum) in Norway and who have had their application processed and rejected in Norway and have exhausted all avenues of appeal. This category also includes persons subject to an expulsion order.
- 2) **Dublin** – anyone returned under the Dublin Regulation. This also includes persons subject to an expulsion order. The Dublin Regulation applies in the EU, Iceland, Liechtenstein, Switzerland and Norway. The Regulation governs, inter alia, which member state will process any given asylum application. The purpose of the Regulation is to prevent asylum seekers from applying in multiple countries, but also to ensure that one of the countries assumes responsibility for the asylum seeker.

- 3) **International protection** – Returns of third-country nationals granted international protection (IP) in another Schengen country. Previously categorised as 'Dublin' returns, IP cases will henceforth be treated as a separate category, as they are not processed under the Dublin Regulation.
- 4) **Refused entry or stay** – persons who have been refused entry or stay as they are not permitted to stay here. This may be for various reasons, but persons who are refused entry or stay are not banned from Norway after their return.
- 5) **Expelled** – anyone expelled from Norway who has not applied for protection (asylum) or who is not subject to the Dublin Regulation. Most of those who fall into this category have been expelled due to a criminal conviction and are banned from Norway for a specific period of time. Violation of the re-entry ban is a punishable offence.

Returnees so far this year by nationality						
	Asylum	Dublin	Granted international protection	Refused stay or entry	Expulsion	Total
Afghanistan		7	6		1	14
Albania					4	4
Algeria		5			1	6
Armenia	1				1	2
Azerbaijan		5				5
Australia	1			2		3
Bangladesh	3				1	4
Belarus		1				1
Belgium				1		1
Bosnia and Herzegovina					2	2
Brazil		1		3	2	6
Bulgaria					1	1
Canada				1	1	2
Chile					2	2
Colombia	15			6	12	33
Denmark					1	1
Egypt		1			1	2
El Salvador	1			1		2
Ivory Coast		1				1
Eritrea		6	2	1		9
Ethiopia	3	1	1		1	6
Georgia	1			2	3	6
Ghana				3		3
Guinea		3				3
Guinea-Bissau					1	1
Greece					1	1
India	1	2		1		4
Indonesia				4		4
Iraq	3	3		2	2	10
Iran	5		3	2	1	11

Returnees so far this year by nationality						
	Asylum	Dublin	Granted international protection	Refused stay or entry	Expulsion	Total
Israel				1	4	5
Yemen		1				1
Cameroon		2				2
Kenya	1					1
China		3		16	6	25
Kyrgyzstan					1	1
Congo		2		2		4
Kosovo				3	3	6
Croatia					1	1
Kuwait					1	1
Laos				1		1
Latvia					2	2
Lebanon		1				1
Libya		1				1
Lithuania				1	15	16
Maldives		9				9
Mali		1				1
Morocco		1			2	3
Mauritania		1				1
Mexico					1	1
Moldova	1				3	4
Netherlands					3	3
Nigeria		1		2	2	5
Pakistan				6	1	7
Palestine		10	3			13
Peru				1	3	4
Poland				7	11	18
Portugal					3	3
Romania				5	31	36
Russia		5		14	3	22
Rwanda	1					1
Saudi Arabia		1				1
Serbia				2		2
Sierra Leone			1		1	2
Slovakia					1	1
Somalia		2			5	7
Spain				1		1
Stateless	1				2	3
United Kingdom				41	13	54
Sudan		2				2
Switzerland					1	1
Sweden					4	4
Syria	3	11	13	1	2	30
Tajikistan				1		1

Returnees so far this year by nationality						
	Asylum	Dublin	Granted international protection	Refused stay or entry	Expulsion	Total
Tanzania					1	1
Thailand				1		1
Chad		1				1
Tunisia		2		1	1	4
Turkey	7	8		2	1	18
Germany					4	4
Uganda					1	1
Ukraine	1	32	1	4	1	39
Hungary					1	1
USA	4			5	4	13
Venezuela		2			6	8
Viet Nam					1	1
Zimbabwe	1					1
<b>Sum</b>	<b>54</b>	<b>135</b>	<b>30</b>	<b>147</b>	<b>185</b>	<b>551</b>

Returnees so far this year by destination						
	Asylum	Dublin	Granted international protection	Refused stay or entry	Expulsion	Total
Albania					4	4
Armenia	1				1	2
Australia	1			1		2
Bangladesh	3				1	4
Belgium			1	1		2
Bosnia and Herzegovina					2	2
Brazil				2	2	4
Bulgaria		2			1	3
Canada				1	1	2
Chile					2	2
Colombia	15			3	11	29
Denmark		2		4	1	7
United Arab Emirates				1		1
El Salvador	1					1
Ethiopia	3					3
France		13		1	2	16
Georgia	1			2	3	6
Guinea-Bissau					1	1
Greece			16		3	19
Hong Kong					1	1
India	1					1
Iraq	3			2	2	7

Returnees so far this year by destination						
	Asylum	Dublin	Granted international protection	Refused stay or entry	Expulsion	Total
Iran	5				1	6
Ireland			1			1
Israel				1	4	5
Italy				3	2	5
Kenya	1					1
China				2	3	5
Kyrgyzstan					1	1
Kosovo				3	3	6
Croatia		9		1	1	11
Kuwait					1	1
Latvia					2	2
Lithuania		1		1	15	17
Mexico					1	1
Moldova	1				3	4
Netherlands		4			4	8
New Zealand				1		1
Nigeria				2	2	4
Oman	1					1
Pakistan					1	1
Peru				1	3	4
Poland		22	1	7	11	41
Portugal		1		1	3	5
Qatar				1		1
Romania		3		5	31	39
Russia				11	3	14
Rwanda	1					1
Serbia				2		2
Slovakia		2			1	3
Somalia					3	3
Spain		19		4	5	28
United Kingdom				69	16	85
Switzerland					1	1
Sweden		12	1	1	6	20
Syria	3					3
Tanzania					1	1
Thailand				2		2
Czech Republic		4		1		5
Turkey	7			3	1	11
Germany		38	9	2	8	57
Uganda					1	1
Ukraine	1					1
Hungary					1	1

Returnees so far this year by destination						
	Asylum	Dublin	Granted international protection	Refused stay or entry	Expulsion	Total
USA	4			5	4	13
Venezuela					3	3
Viet Nam					1	1
Zimbabwe	1					1
Austria		3	1			4
<b>Sum</b>	<b>54</b>	<b>135</b>	<b>30</b>	<b>147</b>	<b>185</b>	<b>551</b>

By destination we mean the country the person is returned to, not necessarily the person's country of origin (or country of nationality).